

CONFINED SPACE ENTRY AND LEAK CHECKS

THE WORLD'S HARDEST WORKING GAS DETECTOR
WITH **INTERNAL PUMP**

KNOWLEDGE IS YOUR SUPERPOWER

When and where are your workers entering confined spaces? Where are they being exposed to gas? Where are leaks occurring? With Blackline's portfolio of connected safety solutions, you'll know.

Our confined space entry and leak check system bundles G7, the world's hardest-working connected gas detector, with our new multi-gas pump cartridge, live compliance dashboard and business analytics reporting. Blackline delivers unbeatable value by bundling proven connected technology, performance, configurability and a range of service options to meet the needs of every business.



BIG DATA, BIG INSIGHTS

When in areas of cellular or satellite coverage, G7 devices automatically upload all usage and gas detection data to the Blackline Safety Network, powering a live compliance dashboard and Blackline Analytics. Blackline Live, our industry-leading cloud-hosted platform, is easy to use and delivers the insights you need to manage comprehensive confined space and maintenance programs.

More data, less work

- Comprehensive confined space entry and leak check work flows
- All data is wirelessly uploaded to the Blackline Safety Network
- Hassle-free compliance dashboard
- Automatic usage and alert reporting
- Automated mapping of the confined space entries, gas exposures, usage and alerts
- Modular design for easy customization and reconfiguration
- Lifetime gas sensor and pump warranty

UNBEATABLE CONFIGURATION

MODULAR DESIGN, LIFETIME WARRANTY

G7 devices feature an exclusive modular design with field-replaceable gas sensor cartridges. If a sensor or pump fails, you're not held back — it only takes a few minutes to change out the cartridge so you can get back to work.

Blackline offers a lifetime cartridge warranty that includes gas sensors and pumps. Simply send the defective cartridge back and we'll replace it.

OVER-THE-AIR CONFIGURATION AND FIRMWARE UPDATES

With G7, connectivity isn't complicated. There's no Wi-Fi networks, smartphones or Bluetooth connections to manage or maintain. When in areas of connectivity, G7 devices automatically upload bump test, calibration, gas readings and usage data to the Blackline Safety Network. Best of all, G7 functionality is automatically maintained — you can update configurations of fielded devices through Blackline Live. Updates are pushed wirelessly, over-the-air.



PUMP WHEN YOU NEED IT, DIFFUSION WHEN YOU DON'T

With user modes, your team is in complete control of their device functionality.

Users can simply turn the pump on when required. When the pump is no longer needed, or the pre-configured timeout is reached, it will turn off and the cartridge automatically switches to diffusion mode.

PRE-ENTRY MODE

Used before entering a space that could potentially contain dangerous gas. In this mode, you can alter how your G7 device will behave when it detects high levels of gas. This mode is available by default for G7 devices fitted with a pump cartridge.

LEAK CHECK MODE

For when G7 is being used to check for gas leaks in a particular area. Users can switch between pumped and diffusion gas detection depending on the environment.

SCBA MODE

Used when entering an area known to have high gas levels and the worker is wearing a self-contained breathing apparatus. This mode can be configured to alter gas alarm and safety alert behaviors.

HIGH RISK MODE

Meant for general high-risk situations, such as evacuations or when traveling through known dangerous areas. If desired, this mode allows G7 to have more frequent check-ins and modified safety monitoring functionality.

PUMP RUN MODE

This mode runs the pump continuously. Unlike other modes, you will never be timed out and must exit manually. Because continuous use of the pump reduces G7's typical battery run time, Blackline recommends using an auxiliary battery when in pump run mode.



SENSORS GALORE

Standard sensors

- Carbon monoxide (CO)
- Combustible (LEL-Infrared)
- Hydrogen sulfide (H₂S)
- High-range hydrogen sulfide (H₂S)
- Oxygen (O₂)
- Hydrogen-resistant carbon monoxide (CO-H)
- Sulfur dioxide (SO₂)

Premium sensors

- Ammonia (NH₃)
- High-range ammonia (NH₃)
- High-range carbon monoxide (CO)
- Chlorine (Cl₂)
- Chlorine dioxide (ClO₂)
- Carbon dioxide (CO₂)
- Hydrogen cyanide (HCN)
- Ozone (O₃)
- Photoionization (PID)
- CO+H₂S (COSH)



HOW TO BUY

G7 INSIGHT

Lease — For customers who prefer to expense a service program, we offer a 36-month lease with zero upfront fees and new equipment upon renewal.

SKU — LEASE

CMP-XX-G7C-P-HIMO-NA

Buy — For customers preferring to use their cap-expenditure budget, Blackline also offers a traditional purchase option with annual service options.

SKU — PURCHASE

| | |
|------------------|---|
| G7C-P-HIMO-NA | G7c, G7 Multi-gas pump cartridge, H ₂ S, LEL-I, CO, O ₂ sensors |
| SER-XX-P-HIMO-1Y | G7 Insight, pump cartridge with four-gas configuration, one year |

SERVICE UPGRADES

We designed our confined space entry and leak check system to meet the needs of every business, even if those needs change over time.

Through plug-and-play cartridges, wireless configuration changes and firmware updates, we have you covered. But, it doesn't stop there — Blackline also offers a range of optional service add-ons that tailor G7 device functionality even further to accommodate your needs.

- Premium gas sensors
- Real-time alerting to a live monitoring team, including fall and no-motion (man-down) detection
- Blackline 24/7 live monitoring
- Two-way voice calling between the live monitoring team and employees (G7c only)
- Push-to-talk capability (G7c only)

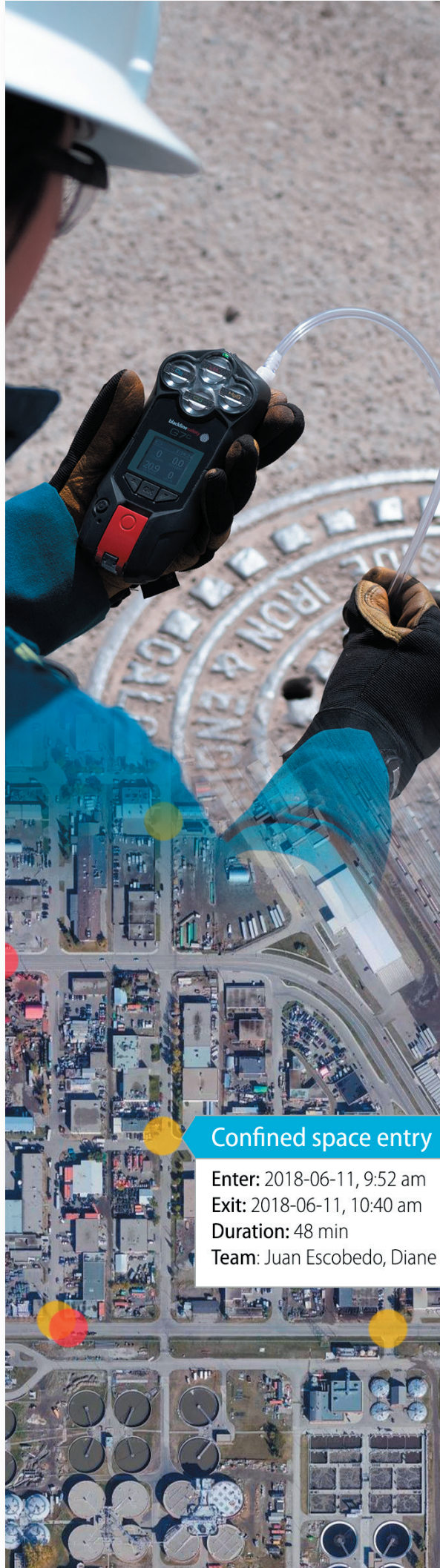
PUMP ACCESSORIES

| SKU — PURCHASE | DESCRIPTION |
|-----------------|---|
| ACC-PUMP-FILT10 | Accessory, Bag of 10 pump cartridge particulate filters |
| ACC-PUMP-STONE5 | Accessory, 5 external stone particulate filters |
| ACC-T2 | Accessory, Tubing, 2ft with Quick-Connects |
| ACC-T10 | Accessory, Tubing, 10ft with Quick-Connects |
| ACC-T50 | Accessory, Tubing, 50ft with Quick-Connects |
| ACC-G7-PROBE** | Accessory, G7 Collapsible Sample Probe |
| ACC-G7-POWER** | Accessory, G7 Power Pack and Clip |

* SKUs shown our most popular G7c four-gas pump configuration with hydrogen sulfide (H₂S), combustible gases (LEL), oxygen (O₂) and carbon monoxide (CO). Blackline offers a complete line of gas sensors and configurations — contact us for further details.

** Available Summer 2019

Contact us for pricing.

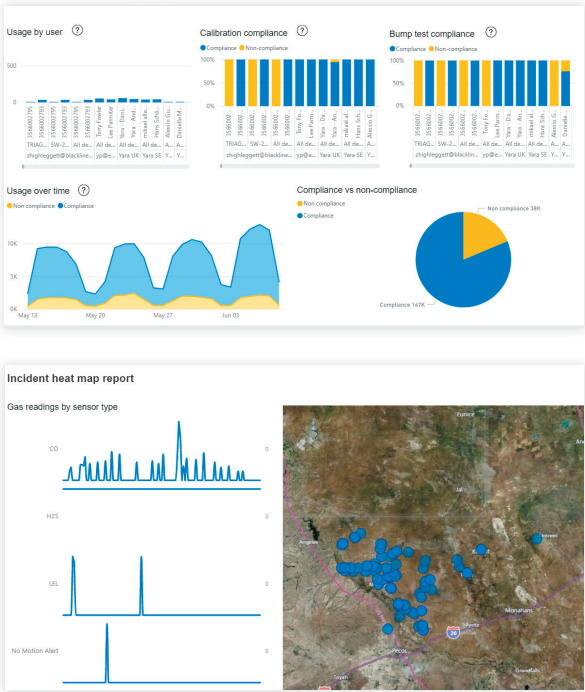


NO MORE PAPERWORK

KEEP DEVICES IN THE FIELD WHERE THEY'RE NEEDED

In the past, maximizing productivity while adhering to regulations using manual and labor-intensive work flows has been a challenge for most teams. Management is often left unsure of how frequently confined space entries are done, where they take place and if any hazards are encountered.

G7 Insight puts the days of manually retrieving data, reviewing spreadsheets and maintaining accurate logs in the past. Usage and alert data is automatically recorded by devices and uploaded to the Blackline Safety Network. Instead of manually compiling data to get an idea of teams' activities, G7 automates confined space entry and leak check work-flows, delivering more data and insights than ever before without any of the work.



Confined space entry

Enter: 2018-06-11, 9:52 am
Exit: 2018-06-11, 10:40 am
Duration: 48 min
Team: Juan Escobedo, Diane

North America | Toll-free: 1-877-869-7212 | sales@blacklinesafety.com
Europe | Phone: +44 1787 222684 | eusales@blacklinesafety.com

blacklinesafety