

blacklinesafety

G7^x

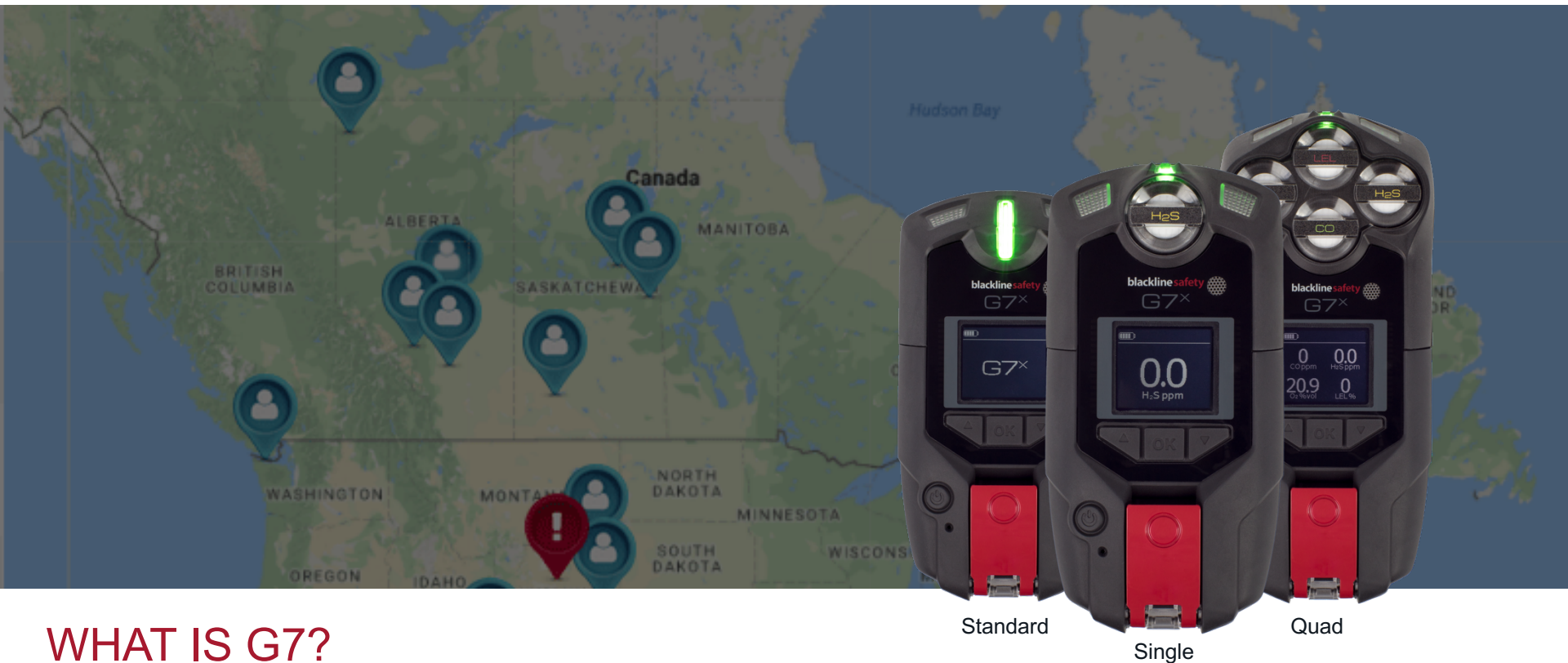
blacklinesafety

G7 BRIDGE



WHO IS BLACKLINE SAFETY?

- Headquartered in Calgary, Alberta, Canada
- Global connected safety technology leader behind G7
- Our talented team of designers and engineers create and manufacture everything in-house
- In-house Safety Monitoring Center and Customer Care
- We offer services in over 100 countries
- Currently monitor over 25,000 employees around the world
- We have recorded 26.5 million hours of equipment use and have managed over 850,000 customer alerts



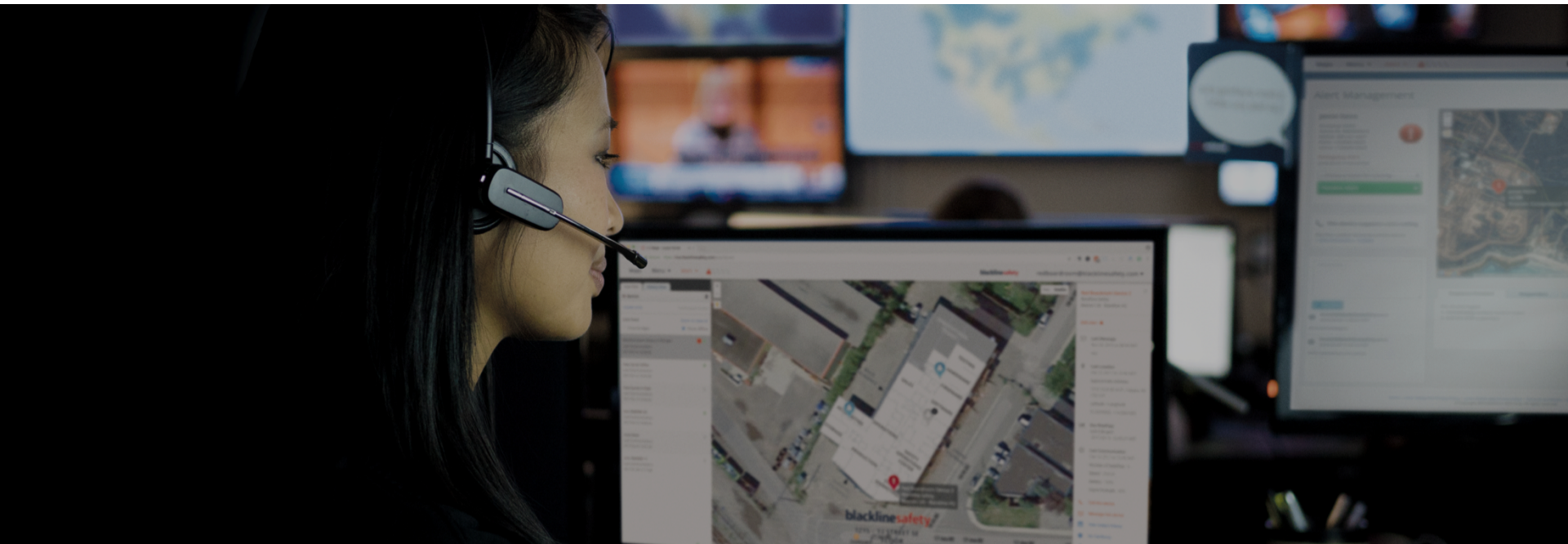
WHAT IS G7?

- Work-everywhere, wearable, personal safety monitor with gas detection
- 18 hours battery
- 2-way texting
- Deliver instant situational awareness
- Manage fastest response
- Intrinsically Safe



WHAT IS BRIDGE?

- Portable satellite & cellular base station
- Works with G7x to monitor your safety even when out of cell range
- Delivers mass notifications
- Is capable of connecting to up to five G7x devices with a range of 2km
- 50 hours of battery -20 to 55C



SERVICE PLANS

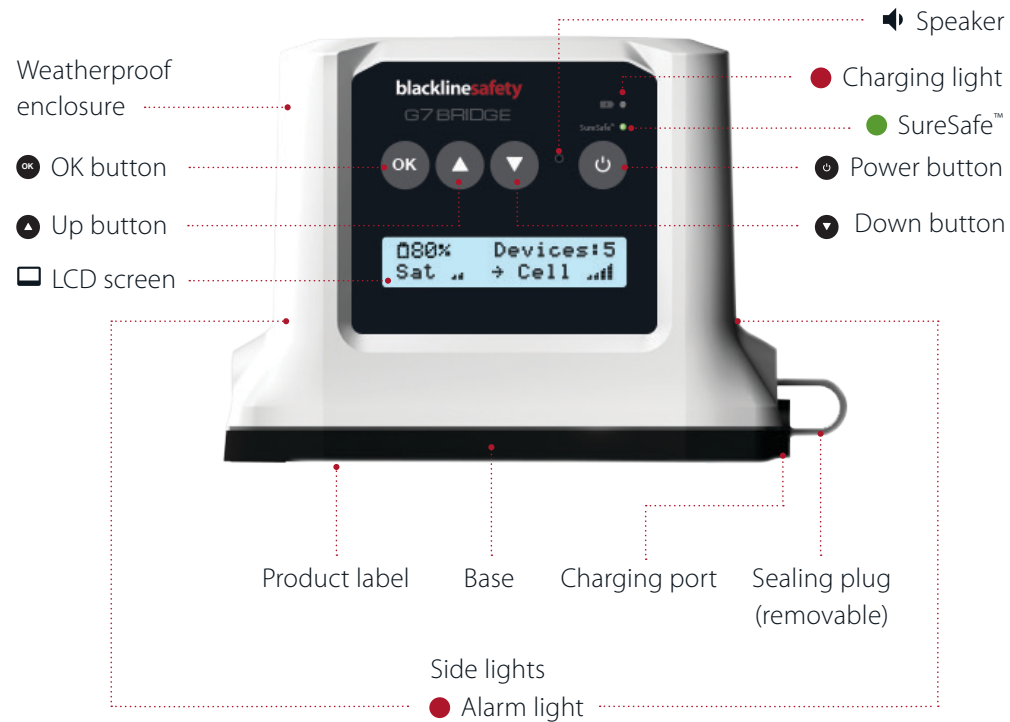
Self-monitored

- Your team monitors your Blackline Live account

Blackline Monitored

- Blackline Safety's in-house monitoring personnel monitor your team 24/7, 365 days a year
- 99.5% of alerts responded to in under 1 minute





MOUNTING

blacklinesafety



Top of vehicle



Dash



On-site



ALWAYS MAKE SURE G7 BRIDGE HAS A CLEAR VIEW OF THE SKY, ESPECIALLY WHEN OUTSIDE CELL COVERAGE

SURESAFE LIGHT

A blinking SureSafe Light means your device is trying to connect. **Don't panic! It's OK to have a blinking light for small amounts of time.**

A solid SureSafe Light means you are connected to the Blackline Safety Network.



Press the power button on G7 Bridge to turn the device on.



Press the power button once on G7x to turn the device on.



Always ensure that G7 Bridge is powered on before G7x.

El emparejamiento de nuevos dispositivos G7x es un paso de la configuración que solo se realiza una vez. Después del emparejamiento, el G7x y cualquier G7 Bridge de su organización se conectarán automáticamente el uno al otro cuando estén encendidos y dentro del rango necesario.



G7x avisa si es necesario emparejarlo mediante una alarma amarilla sonora y el mensaje *emparejamiento necesario* en el área de información. Para realizar el emparejamiento:

1. Encienda el G7 Bridge
2. Pulse OK en el G7 Bridge para abrir el menú
3. Utilice las flechas subir y bajar para desplazarse hasta *emparejar nuevos loners* y pulse OK
4. Utilice las flechas subir y bajar para desplazarse hasta *iniciar* y pulse OK
5. La pantalla del G7 Bridge indicará *emparejamiento iniciado* y buscará dispositivos
6. Encienda hasta 5 dispositivos G7x
7. Cuando el G7x esté emparejado, sucederá lo siguiente:
 - La pantalla principal del G7 Bridge mostrará que hay dispositivos conectados
 - La alarma de advertencia amarilla del G7x se silenciará
 - La luz verde de conectividad del G7x permanecerá fija (no parpadeante)
 - Recibirá un mensaje en la pantalla del G7 que indicará *emparejamiento completado* y se mostrará la clave de la red Bridge de su organización
8. Pulse OK en el G7 Bridge para detener el emparejamiento una vez que se hayan emparejado todos los dispositivos necesarios



Bump Test



Calibration

G7 will let you know it's time to bump or calibrate upon start up.

What do I do?

Press and hold
the up and down arrows
to silence this reminder.

Then, bump or calibrate
using one of the methods
on the next slide.



You can bump and calibrate in one of two ways:

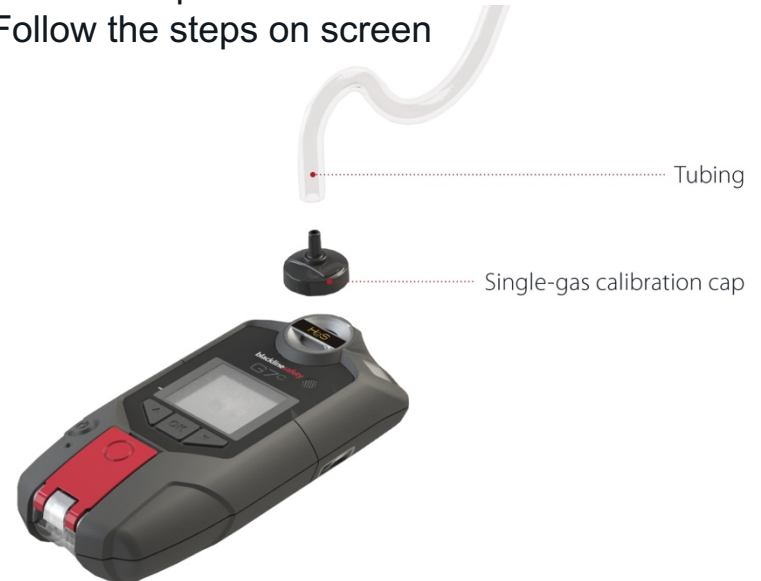
With G7 Dock:

1. Place G7 in dock
2. Close the lid
3. Select bump test/calibration from the menu
4. Let G7 Dock do its thing!



Manually:

1. Press OK to access the menu
2. Use the up and down arrows to navigate to bump test
3. Select bump test
4. Follow the steps on screen





Belt



Chest

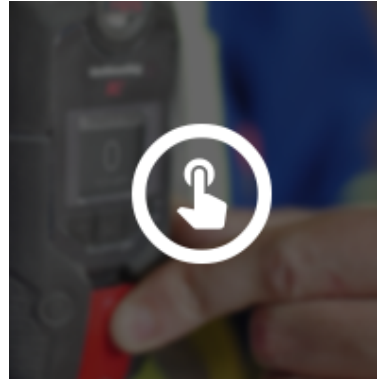


DO NOT LEAVE G7 UNATTENDED WHEN POWERED ON, THIS CAN LEAD TO FALSE RED ALERTS

..... YELLOW PENDING ALARM



Fall detection



Check-in timer



No-motion

What do I do?

Are you OK?
If yes, press the latch
to return the device to
normal function.



What happens if you don't tell the device you're OK?



If you don't confirm you're OK, the Yellow Pending Alarm escalates into Red Alert and notifies monitoring personnel.

What do I do?

Press and hold the up and down arrows to mute the device.

Remember – this doesn't cancel the alert.





If you need to request help right away, you can trigger a SOS Alert.

What do I do?

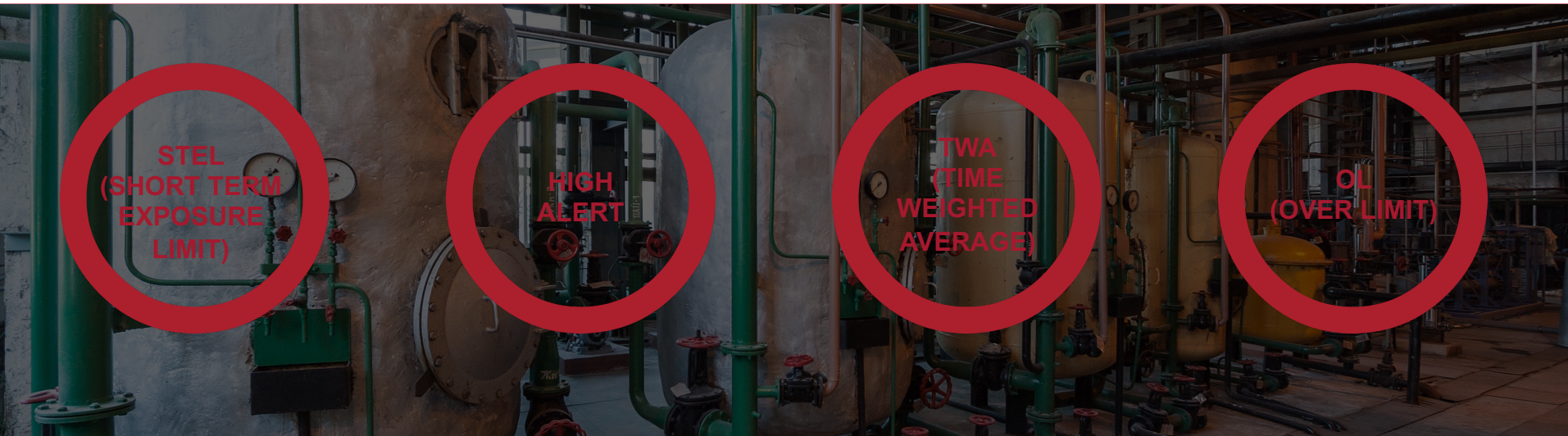
Pull the latch!



How do I silence the alarm?

Press and hold the up and down arrows.
Remember – this does not cancel the alert.





G7 is informing you of something dangerous in your environment.

For real-time customers, certain gas alerts will automatically generate a red alert and notify monitoring personnel.

What do I do?

Evacuate the area. When it is safe to do so, press and hold the up and down arrows to mute G7's lights and sounds.



..... LIVERESPONSE

The LiveResponse light will flash blue when monitoring personnel respond to your Alert using your company's alert response protocol. When it shines on your device, it means someone will be contacting you to confirm you are OK.

What do I do?

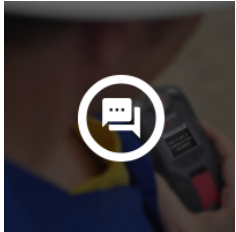
Nothing! Wait for monitoring personnel to call or message you, and then let them know if you're OK or if you need help.



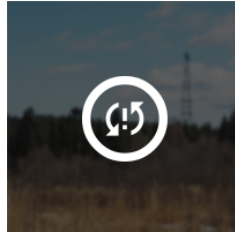
Who are monitoring personnel?

Personnel are the Blackline Live Safety Agents or your own monitoring team.

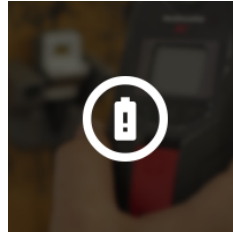
..... YELLOW WARNING ALARM



New message



Network
Connection
Interruption



Low battery



Bump Test



Calibration



- Low warning alarm for gas
- Sensor error
- Under limit



What do I do?

After you've read the screen, press and hold the up and down arrows to silence the device



Remember – Yellow warning alarms never escalate to Red Alerts. They are always between you and your device.



SENDING

Sending a message:

1. Press OK
2. Select send message
3. Scroll to the message you want to send, press OK.

RECEIVING

Receiving a message:

1. Read your message
2. Press and hold the up and down arrows for 3 seconds



Available Modes

What is seen on your device is dependent on your configuration profile in Blackline Live

- **Normal mode**
G7's default for everyday operation
- **Pre entry**
For checking an atmosphere before entering, with or without pump.
- **SCBA**
For use with a supplied-air or self-contained breathing apparatus
- **Leak check**
For checking an area for leaks, with or without pump.
- **High risk**
For general high risk situations, like evacuations.
- **Pump run**
Runs the pump continuously – such as for use in a hole-watch situation. A pump is required for this mode.

ENTERING A MODE



Entering a mode can be done from G7's main or secondary menu.

When a mode is entered, G7's screen will invert and the mode will be displayed in the top information banner.



EXTENDING A MODE

When a mode timeout is reached, G7 will confirm that you'd like to stay in this mode.

What do I do?

Press the up arrow to extend the mode. Press the down arrow to exit the mode.



If you do not confirm that you would like to extend your mode within 30 seconds, G7 will return to normal mode, and if check-in is enabled, ask you to check in.

NOTE: High risk and pump run modes do not have a timeout, you must manually return to normal mode.

G7 MULTI-PUMP CARTRIDGE

blacklinesafety



TURNING PUMP ON

1. Attach a multi-gas pump cartridge to G7
2. Enter a pumped mode, such as pre-entry or leak check
3. Perform a block test, following the steps on G7's screen.
4. Pump will start automatically

NOTE: if the block test fails, the device will not enter the mode and pump won't start.

TURNING PUMP OFF

1. Enter a non-pumped mode, such as normal, SCBA or high-risk.



Block tests are performed to ensure your equipment is working properly before using pump to test the gas levels in an environment.

Blackline's G7 multi-pump cartridge has two types of block tests:

AUTOMATIC BLOCK TEST

This is the block test that G7 runs through before entering a pumped mode.

The instructions for this block test appear on G7's screen. If you pass the block test, G7 will enter the mode and pump will turn on.

If you fail the block test, G7 will return to normal mode.



MANUAL BLOCK TEST

This is the block test that you can perform anytime a pump is running.

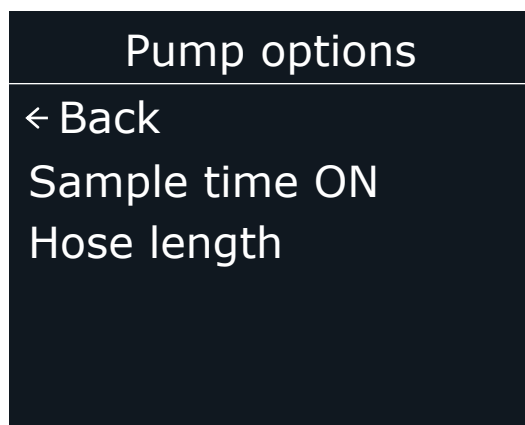
To perform a manual block test:

1. Plug the end of your inlet
2. Wait for a yellow warning alarm
3. Unplug the end of your inlet
4. Wait for the alarm to stop

If the yellow warning alarm sounds when you plug, and stops when you release – your equipment is safe to use.

NOTE: G7 will go into yellow warning alarm when the pump is blocked during use.

When a G7 multi-pump cartridge is attached, a new secondary menu and main menu option appear.

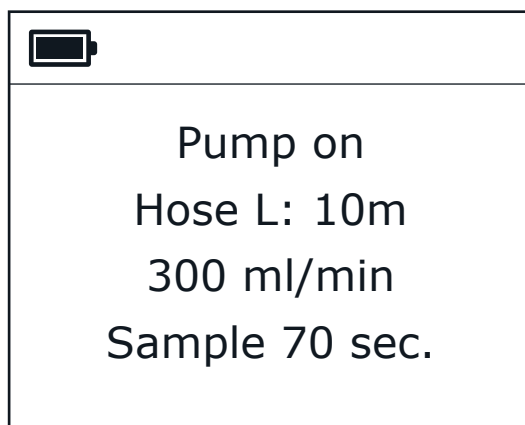


PUMP OPTIONS MENU

The pump options menu is available from G7's main menu, under settings.

This is where you will set things such as:

- Enabling/disabling sample timer
- Hose length



SECONDARY MENU

The pump secondary menu is available by pressing the down arrow button from G7's main screen.

Here you will see things such as:

- If the pump is on/off
- Hose length (set from the pump options menu)
- Flow rate (in real time, maintained by G7)
- Sample timer (if enabled from pump options)



Press and hold G7x's power button for 3 seconds to turn the device off.

Press and hold G7 Bridge's power button for 3 seconds to power off.



Always ensure that all connected G7x's have been powered off before G7 Bridge.

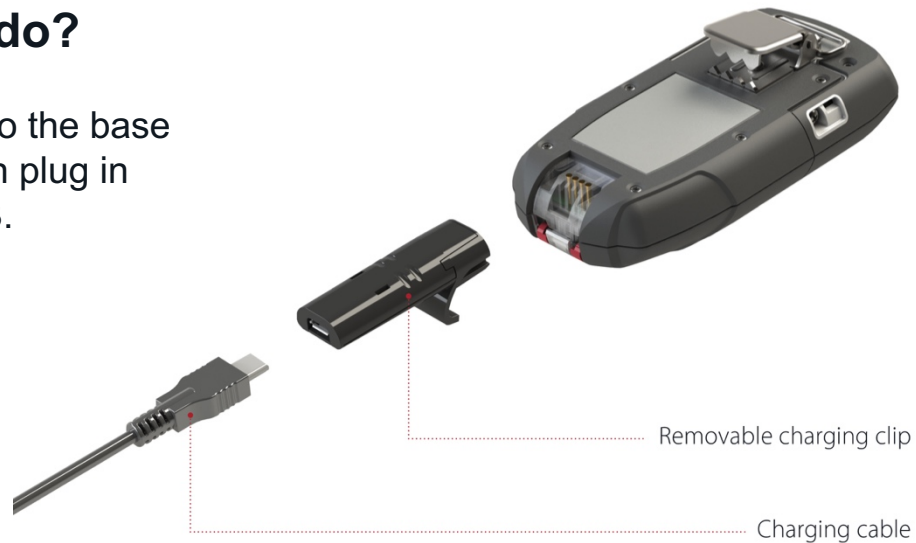
Before powering down, ensure you have a solid SureSafe light.

When all lights have stopped flashing, your device has been fully powered down and your safety is no longer being monitored.

G7x has an 18 hour battery life
Remember to charge after every shift!

What do I do?

Put the clip into the base of the G7, then plug in the micro USB.



G7 Bridge has a 50 hour battery life
Remember to charge after every shift!

What do I do?

Put the clip into the side of G7 Bridge then plug in the micro USB.



A dark, atmospheric landscape photograph of a mountain valley. A river flows through the center of the valley, flanked by steep, rocky slopes. The slopes are covered with dense evergreen forests and patches of yellowish-brown vegetation, possibly indicating autumn or a specific type of flora. In the background, a large, rugged mountain peak rises above the clouds. The overall tone is somber and mysterious, with a dark blue and grey color palette. The word "QUESTIONS?" is overlaid in the center in a white, sans-serif font.

QUESTIONS?



support.BlacklineSafety.com

CUSTOMER CARE

For technical support, please contact our Customer Care team.

North America (24 hours)

Toll Free: 1-877-869-7212

support@blacklinesafety.com

International (24 hours)

+1-403-452-0327

support@blacklinesafety.com