

# CONNECTED SAFETY SOLUTIONS

## WE'VE GOT YOUR BACK

From gas detection to lone worker protection to communication tools to powerful workplace insights, everything you need to ensure everyone gets home safe is right here.



### TRUSTED BY ORGANIZATIONS EVERYWHERE

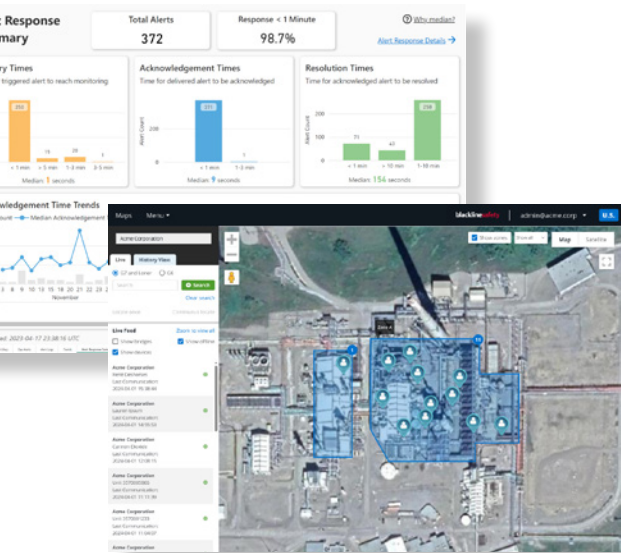
**75+** countries

**165,000+** workers protected

**8+ million**  
alerts responded to

**300+ billion**  
data-points

# SEE MORE, RESPOND FASTER



Our Blackline platform is the engine that brings our connected solution together. It includes:

- ✓ **Cloud-connected safety devices** to detect hazards and location in real-time.
- ✓ **Blackline Live** software portal to monitor, manage and communicate with your people, respond to incidents and save lives.
- ✓ **Blackline Analytics** to deliver automated reports that help you spot trends and improve safety, operations and compliance.

Together they provide full situational awareness and connection to your workers and worksites—from any internet-connected device.

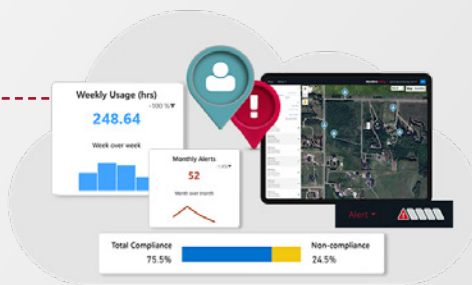
## BLACKLINE PLATFORM

**Area monitors** for gas and gamma detection



**Wearables** with built-in GPS, gas detection, lone worker + communication

**Software portal** to monitor people, manage devices + mitigate risk in real-time



**Automated reporting** to spot trends, manage compliance + improve safety



**24/7 live monitoring** by professionally trained agents



Data collection and analysis is the present and future of the industrial sector. With the data we're able to collect, track and analyze, we can respond and adapt quickly if there is a risk of gas exposure, and look back to take steps to mitigate that risk in the future. Data is a driving force in keeping our people safe."

– Mark Silvester, CEO, Enovert



# CONNECTED WEARABLES—WHERE SAFETY STARTS

## G8

### LONE WORKER | SINGLE OR MULTI-GAS | MULTI-GAS PUMP

The most connected safety wearable ever made, G8 is more than gas detection, more than work-alone protection, and more than a radio. It's all three in one device.

- ✓ **Advanced cellular connectivity** with auto-switching between major carriers for the best coverage
- ✓ **Built-in location technology** to pinpoint worker location accurately and quickly
- ✓ **Modular, plug-and-play gas sensor cartridge system** to meet your changing needs
- ✓ **Real-time alerts** for falls, no-motion, missed check-ins, high and low gas, proximity-based and emergency SOS events
- ✓ **TagAssign™** for quick device assignment in the field



### COMMUNICATE AND COLLABORATE IN THE MOMENT

G8 gives teams multiple ways to communicate—clearly, reliably, and without downtime — in one intrinsically safe wearable.

- ✓ **Emergency Voice:** a real person checks in when an alert is triggered and sends immediate help if needed
- ✓ **Text Messaging:** workers can send quick messages to monitoring teams and receive mass alerts during evacuations or severe weather
- ✓ **Push-to-Talk:** transform G8 into a radio with clear, audible voice and no range limitations

## G7x

G7x\* offers gas detection and work-alone protection, along with satellite connectivity, so you can stay connected to your people in the most rural and remote places.

\*G7x is only available in North America, Australia, New Zealand and South America (excluding Brazil).



## G6

The new standard in single-gas detection to replace your outdated beep-and-flash detector, offering low cost of ownership and unmatched device lifespan.

- ✓ Single-gas detection for H2S, CO, O2 and SO2
- ✓ Direct-to-cloud cellular connectivity
- ✓ The ability to locate people and devices quickly using GPS
- ✓ Emergency SOS

- ✓ Emergency contact notifications in real-time during high-gas, low-gas or SOS alerts
- ✓ Rechargeable battery with up to one year battery life
- ✓ Device life of 4+ years



## COMPREHENSIVE GAS SENSOR PORTFOLIO (G8/G7x/EXO)

One of the largest portfolios of advanced gas sensors, including:

- Ammonia (NH3) & NH3: high-range
- Carbon dioxide (CO2)
- Carbon monoxide (CO) & CO: high-range
- Carbon monoxide: hydrogen-resistant (CO-H)
- Carbon monoxide and hydrogen sulfide (COSH (CO/H2S))
- Chlorine (Cl2)\*
- Chlorine dioxide (ClO2)\*
- Combustible infrared (LEL-IR)
- Combustible MPS (LEL-MPS)
- Hydrogen cyanide (HCN)
- Hydrogen fluoride (HF)\*
- Hydrogen sulfide (H2S) & H2S: high-range
- Nitrogen dioxide (NO2)
- Oxygen (O2)
- Ozone (O3)\*
- Photoionization detection (PID ppm)
- Sulfur dioxide (SO2)

\*not available with pump cartridge

VIEW DETAILED SENSOR  
INFORMATION, INCLUDING  
DEFAULT ALARM LEVELS





## EXO 8 AREA MONITOR

The world's only cloud-connected portable area monitor capable of detecting **up to eight gases and gamma radiation** for the most comprehensive protection and early detection of hazards.

- ✓ Direct-to-cloud cellular connectivity, with optional satellite module
- ✓ Built-in location technology to pinpoint hazard location quickly
- ✓ Drop-and-go deployment with no setup required
- ✓ Up to 100-day battery life for more runtime and fewer charges
- ✓ Rugged, award-winning design for extreme environments
- ✓ Optional gamma detection—providing early awareness when readings rise above normal background radiation levels
- ✓ Real-time gas, emergency SOS and proximity-based alerts, including in stealth mode
- ✓ Active sampling for confined spaces with four-inlet pump module
- ✓ Automatic bump and calibration to improve compliance, reduce costs, and operate continuously

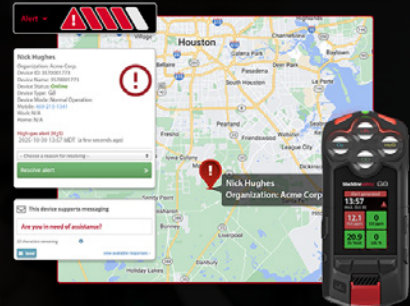


# MONITORING & RESPONSE

## 24/7 LIVE MONITORING TO GET MORE FROM YOUR SOLUTION

We help you take safety to the next level with optional 24/7 live monitoring through your own safety control center, Blackline's in-house, five-diamond-certified Safety Operations Center (SOC), or our global Alarm Receiving Center partners. Trained agents expertly manage emergency alerts in real time, gather critical insights, and respond based on your specific protocols.

- ✓ Alerts received in Blackline Live in under two seconds
- ✓ Response by the SOC in fewer than 60 seconds
- ✓ Emergency services are dispatched if required



# MAKE DATA-INFORMED DECISIONS

## UNCOVER PATTERNS, UNLOCK INSIGHTS

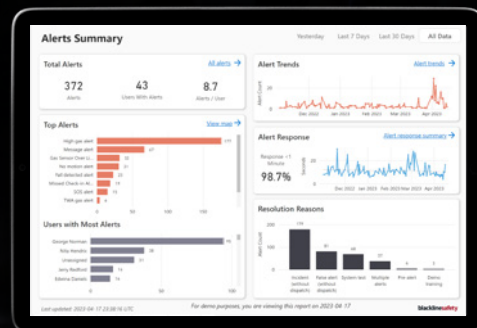
Identify trends and uncover patterns in your operations to improve safety, productivity, and compliance.

- ✓ Save time and effort with automated reports that remove the complexity and errors from manual data collection
- ✓ Set up emailed reports on critical metrics direct to your inbox for alerts, usage, compliance and high gas exposures
- ✓ Use ZoneAware™ to draw site-specific areas and see who is in each zone, spot bottlenecks and save time doing muster drills
- ✓ Build on a strong data foundation that prepares your organization for advanced analytics and future AI capabilities



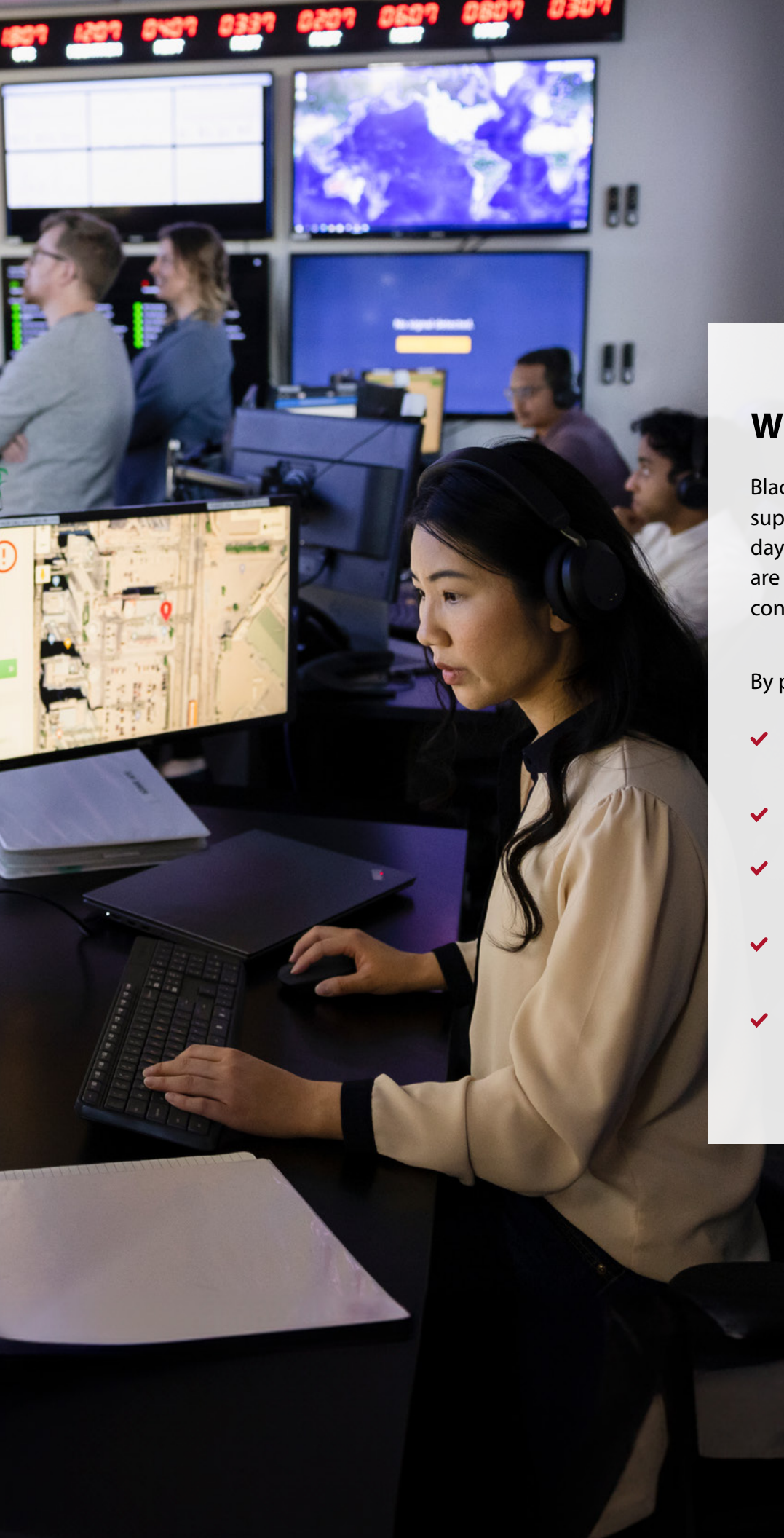
Compliance and fleet management analytics help you make sense of trends in compliance and stay on top of fleet maintenance. For example:

- Usage and compliance
- Bump tests and calibrations
- Device logs



Performance and safety analytics help you move beyond compliance and monitor performance and safety trends in your company globally, regionally, or within teams. For example:

- Alerts
- Gas exposure
- LEL-MPS readings



## WITH YOU ALL THE WAY

Blackline Safety offers complete, dedicated support—for you and your people—from day one. Our passion and dedication are why we have customers who have continued to choose us for two decades.

By partnering with us you get:

- ✓ 24/7 customer care for ongoing support, insights and best practices to help optimize your safety program
- ✓ A dedicated onboarding and implementation team with deep change management expertise
- ✓ Access to the Blackline Help Center for tools, resources and how-to-guides for all our products and services
- ✓ Industry-leading information security, compliance, privacy and reliability that meet the standards of the world's largest companies
- ✓ Flexible buying options—purchase, lease or rent

# READY TO GET CONNECTED?

Join 3,000 leading brands who use Blackline Safety

## INDUSTRIAL



## ENERGY



## CONSUMER GOODS



## FIRE/HAZMAT



**Blackline Safety is a global connected safety leader** helping to ensure every worker has the confidence to get the job done and return home safe. Blackline provides wearable personal and portable area gas monitoring devices, cloud-connected software and data analytics to meet demanding safety challenges and enhance overall productivity for organizations with coverage in more than 100 countries. Armed with cellular and satellite connectivity, Blackline provides a lifeline to tens of thousands of people, having reported over 300 billion data-points and initiated over eight million emergency alerts.

Contact us to discover how to unlock more value from your safety solutions.

**NORTH AMERICA** +1 877 869 7212 | [sales@blacklinesafety.com](mailto:sales@blacklinesafety.com)

**EUROPE** +44 1787 222684 | [eusales@blacklinesafety.com](mailto:eusales@blacklinesafety.com)

**REST OF WORLD** +1 403 451 0327 | [sales@blacklinesafety.com](mailto:sales@blacklinesafety.com)

**blacklinesafety**