

G8 PORTABLE GAS DETECTOR

GAS DETECTION REDEFINED

When hazardous gases are present, there's no room for uncertainty.

G8 delivers advanced gas detection in a rugged, intrinsically safe device designed to perform in the most demanding environments.

With swappable cartridges and coverage with 20+ sensors for virtually any gas your team may encounter, G8 provides reliable protection without slowing work down.

And with real-time alerts, built-in radio communication, and direct-to-cloud data, G8 is more than a device. It's a complete connected gas detection solution designed to help teams respond faster and build a culture that's safer, more productive, and ready for the future.

CONNECTED SAFETY PLATFORM

4G LTE cellular connectivity
with auto carrier switching

Detection for up
to 5 gases

Automatic
over-the-air updates

IP67 certified

Bright color display

Push-to-Talk radio

Quick access
flashlight

Two-way
voice calling

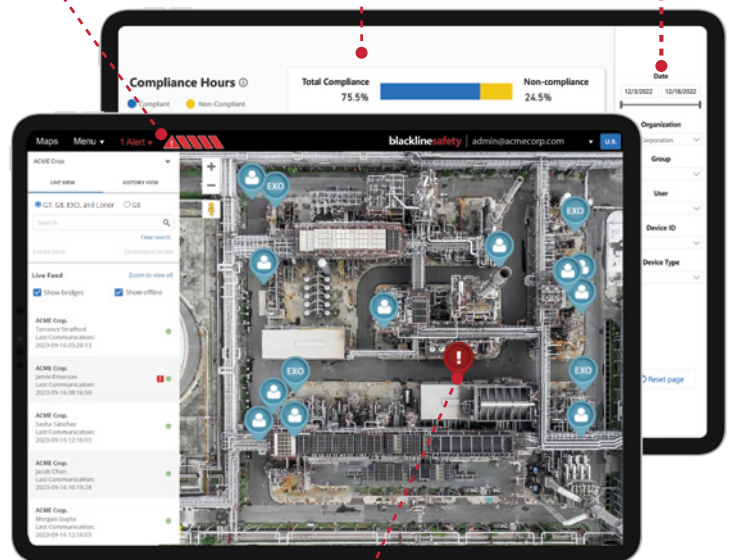


Emergency
SOS latch

Live alerts (gas, fall detection, no motion,
missed check-in, proximity-based,
silent and emergency SOS)

Automated reporting

Interactive analytics to filter
and drill down into your data



Dual-band GPS/GNSS location accuracy



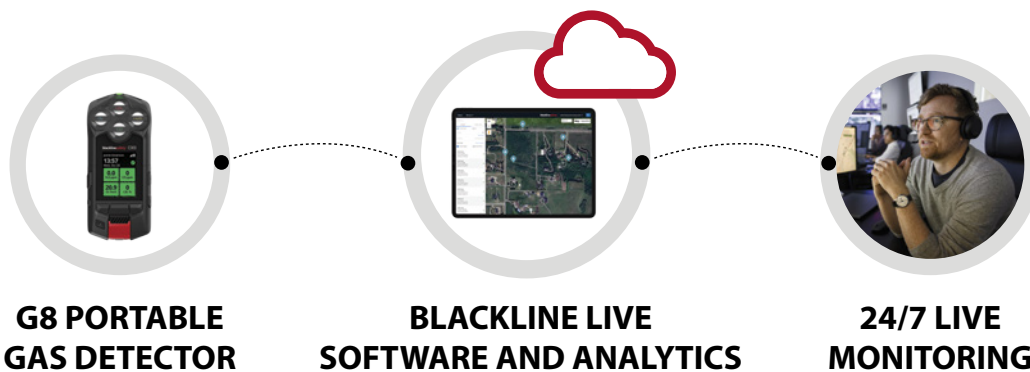
TagAssign™ for one-tap
device deployment



"With the data we're able to collect, track and analyze, we can respond and adapt quickly if there's a risk of gas exposure, and look back to take steps to mitigate that risk in the future."

— CEO, Leading Waste Management Company

MORE THAN JUST A WEARABLE



Connected Gas Detection

- ✓ **Gas detection** for up to five gases simultaneously, choosing from 20+ sensors, with optional pump to easily switch between pre-entry and continuous monitoring.
- ✓ **Real-time alerts** for time-weighted average (TWA), short-term exposure limit (STEL), high/low gas levels, bump tests, calibrations, falls, no-motion, missed check-ins, proximity-based events, and silent and emergency SOS.
- ✓ **Configurable alert thresholds** to align with site policies, regulatory requirements, and job-specific risk profiles.
- ✓ **Direct-to-cloud data streaming** to Blackline Live software.
- ✓ **Dock** for easy calibrating, bump testing and charging, with no complicated ethernet or Wi-Fi connections required.

Shift from reactive to proactive safety

- ✓ **Automated reporting** with Blackline Analytics provides interactive insights that show if safety devices are being worn, turned on, and up to date for easier compliance management.
- ✓ **Sensor readings** to monitor the latest gas data, spot elevated readings sooner, and respond faster.
- ✓ **ZoneAware™** to draw site-specific areas and see who is in each zone, spot bottlenecks, and save time during muster drills.
- ✓ **Historical trend data** on gas leaks and exposures supports incident investigation, root cause analysis, and continuous improvement of gas safety practices.

Human-to-human communication

- ✓ **Emergency Voice** where a real person checks in when an alert is triggered and sends immediate help if needed.*
- ✓ **Push-to-Talk** works just like a two-way radio, using a dedicated button for clear audio and optional remote speaker mic (RSM) rivaling any industrial radio — so teams can coordinate quickly across sites.
- ✓ **Text Messaging** for urgent mass notifications, like evacuations or extreme weather events, and for workers to send custom or pre-set messages to monitoring personnel when help is needed.

*Connects to your own control room or Blackline's 24/7 live monitoring service

COMPREHENSIVE GAS SENSOR PORTFOLIO

One of the largest portfolios of advanced gas sensors with swappable gas sensor cartridge system for single-gas, multi-gas diffusion, multi-gas pump, and lone worker applications, including:

- Ammonia (NH3) & NH3: high-range
- Carbon dioxide (CO2)
- Carbon monoxide (CO) & CO: high-range
- Carbon monoxide: hydrogen-resistant (CO-H)
- Carbon monoxide and hydrogen sulfide (COSH (CO/H2S))
- Chlorine (Cl2)*
- Chlorine dioxide (ClO2)*
- Combustible infrared (LEL-IR)
- Combustible MPS (LEL-MPS)
- Hydrogen cyanide (HCN)
- Hydrogen fluoride (HF)*
- Hydrogen sulfide (H2S) & H2S: high-range
- Nitrogen dioxide (NO2)
- Oxygen (O2)
- Ozone (O3)*
- Photoionization detection (PID ppm)
- Sulfur dioxide (SO2)

*not available with pump cartridge



VIEW DETAILED
SPECIFICATIONS



VIEW SERVICE
PLAN OPTIONS



NORTH AMERICA 1 877 869 7212 | sales@blacklinesafety.com
EUROPE +44 1787 222684 | eusales@blacklinesafety.com
REST OF WORLD +1 403 451 0327 | sales@blacklinesafety.com

blacklinesafety
blacklinesafety.com

01-19-2026