



# G6

## TRANSFORMING SINGLE-GAS DETECTION WITH CONNECTIVITY

Get ahead of your workplace hazards, drive to zero incidents and uplevel your operations with the most comprehensive, cost-effective and connected single-gas detector available—G6.

G6 gives you:

- Faster response time through accurate incident and worker location
- Reduced costs and increased operational efficiency with less lost devices, false alarms and IT infrastructure
- Trustworthy data and instant insights—like easy-to-read visuals for high alarm rates or low compliance—so you can act quickly
- Long-lasting design with over-the-air updates to futureproof your investment

It's what makes G6 the new standard in single-gas detection. An innovative—and economical—solution for improving safety and operational performance in the modern industrial workplace.

## Features



Direct-to-cloud connectivity



Integrated GPS location technology



Single gas detection



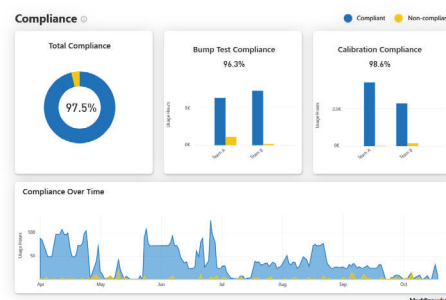
Rechargeable battery



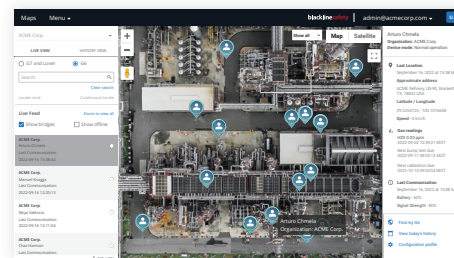
Reduced false alarms



Data-rich reporting



Blackline Analytics essential reporting



Blackline Live platform



## DETAILED SPECIFICATIONS

### Standard features

Single-gas monitoring - CO, H<sub>2</sub>S, O<sub>2</sub>, or SO<sub>2</sub>  
 Direct-to-cloud connectivity  
 Over-the-air configurations  
 Automatic over-the-air updates  
 Integrated GPS location technology  
 Find My G6  
 Up to 1-year battery life  
 Rechargeable battery  
 Automatic bump tests and calibrations through G6 Dock

### Standard safety features

Device location, gas readings, bump and calibration data, and alarms automatically uploaded daily  
 High gas notification  
 Low gas notification  
 Short-term exposure limit (STEL) notification  
 Bump test and calibration notification  
 Bump test and calibration failure notification

### Size & weight

Size: 71mm x 110mm x 37mm (2.8" x 4.3" x 1.5")  
 Weight: 146g (5.2 oz)

### User interface

240 x 320 pixel graphical, high contrast, 6-bit color liquid crystal display  
 Menu system and power-on driven by threebutton keypad  
 Multi-language support: EN, FR, ES, DE, IT, NL, PT

### User notification

Visual: Color display and multi-color lights on top and side  
 Sensory: Vibrating  
 Audible: ~95 dB @ 30 cm (11.8")

### Power & battery

Rechargeable Li-ion battery: 1200 mAh  
 Battery life: Up to 1 Year at 20°C (68°F) under normal usage  
 Charge time: 4 hours

### Approvals

SAR, RoHS, CE, RCM  
 FCC ID: W77G62 IC: 8255A-G62  
 Contains FCC ID: XPY1EIQ24NN,  
 IC: 8595A-1EIQ24NN  
 Canada & USA: Class I Division 1 Group A,B,C,D T4;  
 Class I Zone 0 AEx ia IIC T4; Ex ia IIC T4 Ga  
 IECEx: Ex ia IIC T4 Ga  
 ATEX: Ex ia IIC T4 Ga  
 UKCA: Ex ia IIC T4 Ga

### Location technology

GPS Radio: 48-channel high sensitivity  
 Assisted-GPS: Yes  
 GPS Accuracy: ~5 m (16 ft) Outdoors  
 Location update frequency: During high urgency events and once per day

### Sensor Specifications

GAS	SENSOR TYPE	RANGE	RESOLUTION
<b>CARBON MONOXIDE (CO)</b>	Electrochemical	0–500 ppm	1 ppm
<b>HYDROGEN SULFIDE (H<sub>2</sub>S)</b>	Electrochemical	0–100 ppm	0.1 ppm
<b>OXYGEN (O<sub>2</sub>)</b>	Electrochemical	0–25% vol	0.1% vol
<b>SULFUR DIOXIDE (SO<sub>2</sub>)</b>	Electrochemical	0–100 ppm	0.1 ppm

### Cellular Communication

LTE-M and NB-IoT

### Environmental

Storage temperature: -30°C to 60°C  
 (-22°F to 140°F)  
 Operating temperature: -20°C to 55°C  
 (-4°F to 131°F)  
 Charging temperature: 0°C to 45°C  
 (32°F to 113°F)  
 Ingress Protection: Designed to meet IP67

### Warranty

Four-year limited warranty

### Blackline Live web application

Cloud-hosted safety monitoring web application is customizable for every customer requirement  
 Includes compliance dashboard, map, user roles, device configurations, notification setups, and essential reporting

All specifications subject to change without notice.